

OVERVIEW: The Essentials Configuration is a data management, analysis, mapping and graphical display system for all exploration data. Whether you are in the field or at the office, the Essentials Configuration has the tools you need to create databases, conduct statistical analyses, manipulate data and plot maps and sections. This configuration also features 3D-rendered viewing capabilities for topographic, drillhole, traverse, polyline and point data. The Essentials Configuration is ideal for the geologist who needs to manage spatial information specific to mineral exploration projects. Its familiar Windows interface makes it quick and easy to use.



GET THE MOST FROM YOUR DATA AND ENSURE COMPLETE ACCURACY

The GEMS data manager offers Open Database Connectivity (ODBC) compliancy, ensuring that any database you create can be accessed by other programs, such as Microsoft Access®, or Windows-based reporting and graphing systems. Whether you design your own database or let GEMS' wizards create it for you, the flexible architecture lets everyone on your project—whether they are at home, in the field or in the office—access and update the data at any time and any place.

The Essentials Configuration has comprehensive filtering tools to help you select just the right data for processing. The simple and conditional manipulation tools offer full flexibility for calculating new values such as Net Smelter Return (NSR) or drillhole collars in an alternate coordinate system. If you need to composite drillhole data, you can select from one of the eight methods available, making this a simple and effortless task.

Gemcom understands the importance of data validation in maintaining the integrity of your drillhole information. That's why the Essentials Configuration is designed to readily identify interval overlaps in data, or missing sample data. From soil samples to drillhole assay values, the Essentials Configuration has the tools you need to understand and analyse your data. For a better understanding of population distributions, GEMS makes it easy to prepare frequency distribution histograms or log probability graphs. Users can also use the linear and 3D semi-variogram analysis tools in this system to analyse trends or scrutinise sampling and assaying techniques, and finally, paste graphs into any Windows-based document.

ESSENTIALS MAKES IT EASY

If you work with point data, the Essentials Configuration provides a solution for your needs. With this system, users will benefit from how quickly they can create variable symbol maps, contour plots and generate bitmap images of anomalous zones. Using the Essentials Configuration, users can digitise topography contours and underlay their geological mapping and trenching information, then plot it to any Windows-compliant printer or plotter.

Creating informative plots of your drillholes is just as simple, and annotating your drillhole traces with patterns, colours, values, text, line and bar graphs becomes an equally effortless task. With a simple click of the mouse, you can also add a topographic profile to each section plot. The Essentials Configuration excels in the batch processing of sections, complete with automatic generation of legends and scale bars. GEMS' graphical editor makes it easy to modify any plot you prepare. GEMS' PlotMaker application can now process plotting from a pre-defined list (batch list). Batch plotting can be used to preview, open, and print any plot in a batch list. The batch list can add variable text, OLE objects, or bitmaps to your plots. Now *that's* flexibility!

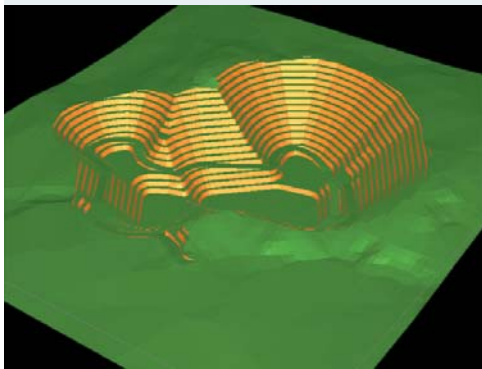
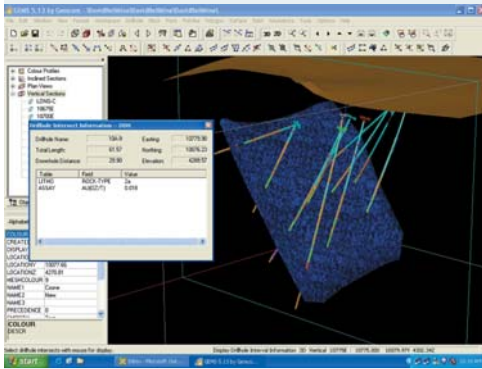
THE 3-D ADVANTAGE

Exploration is a three-dimensional business. That's why viewing your drillholes, topography and point information in 3D can give you a whole new perspective on your data. The Essentials Configuration is loaded with options for rotating and rendering your drillhole, traverse, point and polyline data so you can view it from any angle. Further, GEMS gives you the ability to share the power of 3D, an essential feature to maintaining accurate data. It's easy to give your reports or presentations a sleek look by cutting and pasting your 3D view. The Essentials Configuration has everything you need to explore your world of opportunity.

GEMS ESSENTIALS CONFIGURATION

A MUST-HAVE SYSTEM FOR ALL GEOLOGISTS

To find out more about how your operation can benefit from GEMS, contact us at info@gemcomsoftware.com, or visit our web site at www.gemcomsoftware.com.



FEATURES

Database Management

- ODBC compliance
- Compatibility with Microsoft Access® and SQL Server®
- Database restructuring
- Import/merge options for ASCII files
- Import options for data from other systems
- Data extraction using selection criteria
- Data validation tools for drillhole data
- Comprehensive filtering options
- Simple or customised report generation
- Simple and conditional data manipulation
- Specialised manipulation operations
- Coordinate transformations
- Tools for compacting and repairing databases

Data Analysis

- Histograms and frequency distribution analysis
- Scattergrams
- Regression analysis
- Log and probability graphs
- Linear and 3D semi-variograms
- Semi-variogram modelling
- Graphs formatted for any document

Plane Plot Creation

- Batch plane processing options
- Variable symbol maps
- Surface structure maps
- Sections through drillholes, trenches
- Pattern or colour-filled drillhole or traverse traces
- Stacked annotation along drillhole or traverse traces using
 - Values or graphs
 - Data interpolation using inverse distance, Laplace Gridding
- Creation of cell and contour plots and "hot/cold" bitmap.

Compositing

- By length, level planes, pre-defined intervals
- By cut-off grade, cumulation and strip ratios
- By table merging and value grouping

- By length within solids
- Automatic update of composite tables and solids
- Options for handling missing sample values
- Additional weighting field option

Polyline Editing Tools

- Definition of different line styles and types
- Contour, feature or clipping
- Polyline types
- Modification, deletion and addition of line segments
- Addition, insertion, deletion and moving of vertices
- DXF export/import for polyline/polygon data

3D Visualisation

- Points, status lines, polylines and drillholes displayed in 3D
- Drillholes displayed as solid core, as assay values, or coloured by lithology
- View orientation by rotation, panning and zooming
- Bitmaps of all 3D objects

Graphics and Utilities

- Graphics acceleration for real-time rotation
- Customisable digitising profiles
- Wintab-ready digitising
- Digitisation of points that represent geochemical sample sites
- Digitisation of topography or claim lines
- Compatibility with any Windows-compliant printer/plotter
- Output of rendered graphics as bitmaps
- Underlay of raster images from other sources
- Time-saving batch plotting option: use of PlotMaker to preview, open, and print any plot in a batch list. The batch list can add variable text, OLE objects, or bitmaps to plots.